



FABULOUSLY RURAL



Away from the hustle and bustle

Discover our award-winning boutique salon situated in a rural, tranquil location, offering privacy and parking. The salon is praised by clients for its peaceful surroundings, expert beauty practitioners and bespoke beauty formulas.

Our ethos is to deliver treatments to the highest standards, using a professional method of delivery and the best quality products - from creating a spotless environment to delivering outstanding treatments.

At The Beauty House your treatments are about you; some client's prefer to be in and out quickly, others are happy to browse products and savour a freshly brewed herbal tea. No matter your needs, we aim to make your whole experience an enjoyable one.







Beauty in the heart of St Mary's

Our team of beauty practitioners offer a personalised service. Each member is specialised in a particular area, from semi-permanent make-up and skin care, to intimate hot waxing.

Founder Sharon Coote, together with her team, have over forty years experience in the beauty industry. They have chosen the most effective products and treatments including: unisex intimate hot waxing, bespoke skin care, semi-permanent make up, spa experience body treatments, manicures, pedicures and massage.

Face Treatments

All of our facials are suitable for men and women. Our bespoke skin consultation allows us to match the right products to your particular skin type and needs. We advise you on how to take care of your skin on a daily basis so that you can get the outcome you desire.



Love your skin

Beauty House Signature Facial

£160 | 60 minutes

We have designed this facial specifically to give you all the things you love, from the steam, extraction and deep cleansing to the relaxing face, neck and scalp massage using Pevonia's De-Stress Aromatherapy blended oils. This facial truly encompasses all the best bits of our favourite facials. Universal treatment for all skin types. Includes professional skin diagnosis and help with your homecare routine. This facial is ideal to introduce your skin to the unadulterated pure and active products within the Pevonia line.

- *Outstanding results for every skin type*
- *A bespoke massage*
- *Facial also includes enzyme exfoliation, steam and extractions*

Stem Cells Phyto-Elite®

£180 | 60 minutes

A groundbreaking plant-based treatment redefines the anti-aging facial. Infused with the first-ever blend of argan and comfrey stem cells and supercharged de-agers like collagen, retinol, elastin, it starts working from the first application. Visibly reducing lines and wrinkles, it delivers a smoother skin surface, and long-term protection of the skin's naturally repairing stem cells. A power house facial to future-proof skin health.

- *Suitable for all skin types, recommended for skin 30 years +*
- *An active massage targeting lines and wrinkles, whilst lifting and sculpting the face*
- *Facial also includes enzyme exfoliation, steam and extractions*
- *A series of 7 weekly facials for best results*

Hydra-Cloud

£105 | 60 minutes

This hyaluronic acid facial is blended with micronized cotton extract, to promote restorative skin health and deeply quenched skin. Formulated to counteract signs of ageing as well as the effects of sun damage, it works to quickly rid your skin of environmental pollutants and toxins. The highly concentrated hyaluronic blend plumps visible lines and wrinkles and your complexion resurfaces instantly brighter. This facial uses a mousse cloud mask for an ultra-cool refreshed feel. Recommended for all skin types, ideal for perimenopausal and menopausal skin.

- *An active massage targeting lines and wrinkles, whilst lifting and sculpting the face*
- *Facial also includes enzyme exfoliation, steam and extractions*
- *A series of 7 weekly facials for best results*

Lumafirm® Lift & Glow

£115 | 60 minutes

Redefining radiance and facial contouring, this exclusively formulated treatment features the latest in freeze-dried technology to deliver instant results and cumulative skincare benefits. Ideal for any skin type showing signs of aging, or as the perfect instant repair boost when you want to look your absolute best. Proven to perform, this facial renders your skin ultra-luminous with a firmer, tighter, and more youthfully defined appearance.

- *Ideal pre-party or wedding for an instant lift and glow*
- *All skin types*
- *An active massage targeting lines and wrinkles, whilst lifting and sculpting the face*
- *Includes enzyme exfoliation, steam and extractions*
- *A series of 7 weekly facials for best results*

Anti-Free Radical

£105 | 60 minutes

This facial treatment combats dry, dehydrated, and clinically dry skin conditions. Organic mandarin oil is used to massage the skin, infusing vitamins A, E, and D, fighting free radicals that cause premature ageing. A bi-thermal eucalyptus mask warms to promote vitamin absorbency, then cools to seal in hydrating benefits. An invigorating and nourishing facial.

- *This facial is ideal for eczema*
- *An active facial massage working muscle tone and sculpting contour*
- *Facial also includes enzyme exfoliation, steam and extractions*
- *A series of 7 weekly facials for best results*

Plantomer®

£105 | 60 minutes

This highly effective, soothing treatment calms redness and alleviates irritated or sensitive skin. Healing propolis is applied to desensitise the skin's surface and strengthen capillaries. A cooling seaweed rubber lift-off mask is then applied to seal in the benefits of the vitamin-enriched serum.

- *An SOS facial for all skin types*
- *Incredible for acne prone skin due to the antibiotic nature of Propolis*
- *A targeted pressure point massage*
- *Facial also includes enzyme exfoliation, steam and extractions*
- *A series of 7 weekly facials for best results*

RS2 - Rosacea

£105 | 60 minutes

Relieve and repair fragile skin with green tea, liquorice, and French rose. This gentle yet active facial calms the skin, eases blotchiness and reduces capillary dilation and redness. An ideal treatment for all microcirculation problems and hypersensitive skin conditions, specifically: Couperose, Erythrose, Erythrocouperose and Rosacea.

- *Especially for rosacea skin types*
- *A mindful, soft, targeted pressure point massage*
- *Facial also includes enzyme exfoliation, steam and extractions*
- *A series of 7 weekly facials for best results*

Luminous “C” & “Sea”®

£105 | 60 minutes

A radical facial treatment for dull lacklustre skin. This facial combines the high potency of Vitamin “C” with a stimulating Freeze-Dried Seaweed gel. Skin appears firmer, brighter, and rejuvenated. An excellent treatment for smokers, sunbathers and sun-damaged skin. Uses a rubber mask to intensify hydration and boost luminosity.

- *Ideal for collagen stimulation and sun damage*
- *A firm stimulating massage*
- *Facial also includes enzyme exfoliation, steam and extractions*
- *A series of 7 weekly facials for best results*

Elasto-Firm

£105 | 60 minutes

An excellent facial for those seeking tighter, firmer, radiant skin. Renowned for its rejuvenating benefits, the Elastin serum uses a strengthening protein and an intensive sheet mask to lock-in firming properties to lift and define skin. Recommended for any skin type with loss of elasticity and collagen.

- *All skin types, especially ageing*
- *A lifting and sculpting massage*
- *Facial also includes enzyme exfoliation, steam and extractions*
- *A series of 7 weekly facials for best results*

Oxy-Vital

£105 | 60 minutes

Intensively soothing, this treatment combines healing Aloe Vera, calming Azulene, and wrinkle-smoothing Collagen Fibre to activate oxygen utilisation within the cells, soothe redness, and relieve sensitivity. Ideal for couperose, sensitive and hypersensitive skin types. The Oxy-Vital sheet mask is also recommended post-operatively following laser light-based therapies, microdermabrasion, acid peels, or any treatment that may have traumatized the skin. It is also recommended as a post-sun exposure treatment.

- *All skin types, especially sensitive*
- *A soothing targeted pressure point massage*
- *A series of 7 weekly facials for best results*

Aromatherapy

£90 | 60 minutes

An invigorating aromatic blend of pure organic essential oils makes this facial unforgettable. This experience includes cleansing and gentle exfoliation; an extended facial, scalp, neck and shoulder massage and the ideal mask best suited for your skin type.

- *All skin types*
- *A flowing facial massage*



Facial Peels

Youthrenew™ Hydra-Glow

£90 | 45 minutes

Quick and precise – a natural lactic acid based facial peel that exfoliates and helps improve overall complexion, and provides firmer, hydrated, brighter-looking skin after just 1 use. A series of 3 to 7 peels provides best overall results. HydraGlow peel helps improve the appearance of the following skin concerns:

- *Fine lines and wrinkles*
- *Rough, uneven skin*
- *Blemishes*
- *Mild hyper-pigmentation*
- *All skin types and acne prone skin*
- *For optimum results couple with a course of facials to achieve greater extraction and congestion clearing*


Spa Clinica Micro-Retinol®

£110 | 60 minutes

This Micro-Retinol® treatment uses an unsurpassed clinical peel formulation to activate cell renewal, resurface and visibly smooth skin. This facial treatment is boosted with a high performance retinol serum and mask for an ultimate flawless complexion. Micro-Retinol peel helps improve the appearance of the following skin concerns:

- *Fine lines and wrinkles*
- *Rough, uneven skin*
- *Scarring and acne*
- *Mild hyper-pigmentation*
- *A series of 7 weekly facials for best results*





“ Treatments are 100% perfect. Whether it’s a routine waxing or relaxing facial, I come out of the salon feeling and looking like a new woman! ”

— Sandra Costard

Eye Treatments

Refresh tired eyes and treat yourself to the repairing benefit of a Pevonia eye treatment. All our eye treatments are suitable for men & women.



Relax your eyes

Ginkgo De-Stress Eye

£45 | 30 Minutes

An instant-release collagen formula infused with ginkgo biloba. This natural fibre mask treatment, soothes, cools, and decongests the fragile eye contour while visibly reducing puffiness and dark circles. Eyes are rendered visibly rejuvenated.

- *Eye contour mask*
- *Can be added to any facial treatment*

Smoothing Eye Treatment with Collagen

£45 | 30 Minutes

Treat your eye area to the repairing benefits of 100% pure marine collagen. This active treatment refines fine lines and wrinkles while reducing crepiness. Your eye contour is wonderfully rejuvenated.

- *Eye contour massage*
- *Can be added to any facial treatment*

Full Eye Treatment

£80 | 45 Minutes

Incorporating the two treatments above this luxurious eye treatment targets both puffiness and wrinkles for maximum eye rejuvenation and relaxation.

- *Eye contour massage and mask*
- *Can be added to any facial treatment*

Lumafirm® Lift & Glow Eye Contour Treatment

£60 | 30 Minutes

Formulated with an amazing lift-action complex, this phenomenal treatment instantly repairs your delicate eye zone as it reduces puffiness and dark circles. Additionally, an anti-ageing powerful trio of actives give immediate reduction in lines and wrinkles and a visibly brighter, smoother eye contour.

- *Eye contour massage and mask*
- *Ideal in conjunction with the Lumafirm® Lift & Glow Facial*



Body Exfoliation & Wraps

Stem Cells Phyto-Elite® Salt Glow Body Polish

£80 | 45 minutes

Aromatic and gentle, this creamy body polish exfoliates dry skin and polishes away toxins through a series of massage techniques. The body is then fully moisturised, with skin resurfacing silky-soft and wonderfully hydrated.

Stem Cells Phyto-Elite® Wrap

£150 | 60 minutes

An exfoliating, contouring, and regenerating wellness experience. This results driven therapy uses duo-dermal repair technology. Infusing your skin with the latest de-ageing natural actives, argan and comfrey plant stem cells, green coffee, avocado and shea butter. This active treatment is proven to dissolve unwanted fat and cellulitic deposits while reducing skin sagging and repairing sun damage. An active targeted body treatment, to fight ageing skin, diminish fat deposits and resurface uneven skin.

- *A series of 7 body treatments taken weekly provides best overall results*

Tropical Escape Saltmousse: Pineapple & Papaya

£75 | 45 Minutes

French sea salt and organic fruit extracts enriched in pro-vitamin A and carrot seed oil are applied to your body recreating the seawater ambiance experience. This revolutionary anti-ageing saltmousse refines your skin unlike any other exfoliation treatment, releasing negative ions into the skin for a healthier and softer body.

Tropical Escape Wrap: Pineapple & Papaya

£120 | 60 minutes

This papaya-pineapple body wrap is enriched with Crème Fraîche natural butter, calcium, vitamin A, pomegranate, wrinkle smoothing collagen polypeptides and firming elastin polypeptides. An uplifting sensory treatment using a tropical saltmousse scrub and a luscious Crème Fraîche mask formula. As you are enveloped by the scent of vanilla and enticing tropical fruits, your skin is deeply nourished and rejuvenated.

The spa experience

Crepe-No-More

£105 | 60 minutes

Experience the latest in body de-ageing with this antioxidant-rich body wrap. The lusciously crafted blend of longan Superfruit and potent skin de-agers like collagen, hyaluronic acid, and shea butter, works to radically counteract skin crepiness and uneven texture while awakening your cells' metabolism. Featuring No Rinse technology, this repairing wrap stays on your skin for boosted benefits and is eco-conscious as it saves water.

- *A series of 7 body treatments weekly for best results*

Detox Seaweed Wrap

£115 | 60 minutes

This therapeutic seaweed wrap contours, firms, hydrates, and re-mineralises environmentally damaged skin. Your treatment begins with a gentle exfoliation, followed by the generous application of warm micronized seaweed cataplasm. You are then wrapped in thermal blankets to ensure your entire body releases stress and toxins. A scalp pressure point massage is performed before finishing with a full body hydration cream. A rejuvenating body experience that leaves you renewed and decompressed from head to toe.

- *A series of 7 body treatments weekly for best results*

Lumafirm® Body Firm & Glow

£130 | 60 minutes

Enriched with an exclusive combination of anti-ageing extracts, peptides, and amazing liposomic technology. This full body treatment is deeply repairing, smoothing, de-ageing. This four-step treatment uses an intensive elixir, message gel, body mask and moisturiser. A relaxing yet effective body treatment, that gives softness, luminosity and contour.

Aromatic Total Back

£110 | 60 minutes

Restore, clear and improve back skin health with this bespoke targeted treatment. A massage exfoliation is applied to the back, followed by steam and extraction (if needed), and a relaxing massage. A tailored mask is applied to soothe, calm and heal. A back serum is then applied to lock in moisture and balance skin Ph. This treatment is ideal prior to a massage for longer lasting ease of tension, acne on the body or simply as a sole therapy.



SHARON COOTE

SEMI-PERMANENT MAKE-UP

Light up your eyes with Micro-Pigmentation

Semi-permanent make-up or micro-pigmentation creates definition by implanting pigments into the skin using specialist tools. The technique transforms your brow and eye line so that your eyes appear bigger, brighter and better defined.

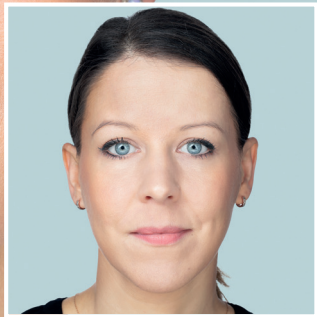
Microblading is a form of micro-pigmentation, this technique is a perfect way to correct over-plucked, patchy or thin brows or to recreate brows which have been lost as a result of a medical condition. You can choose a soft subtle approach or create a more intense look, either way the results are stunning.

Microblading for Eyebrows

Using a state-of-the-art designed hand tool, tiny precise hair strokes are etched into the dermal layer of the skin. The sensation is similar to a scratch but you should not feel any discomfort. Pigments are then implanted into the channels created by the microblades to mimic natural hairs. The finished result will look 20-30% darker for the first seven days while the healing process takes place. The treatment takes approximately two hours and you will leave with highly defined, ultra-realistic looking brows.

Semi-Permanent Eyeliner

Using a specialist facial tattooing machine, which works at a much lower frequency than a standard tattoo machine, we gently apply pigment to the skin using very fine needles. We can create eyeliner to suit your style, either a natural lash enhancement or a stronger winged line to replicate makeup. The process is a lot easier than you imagine and the sensation is a bit like a tickle from an electric toothbrush. The process normally takes two hours, but it varies from person to person depending on your individual requirements. Allow seven days for the full healing process.



SHARON COOTE

SEMI-PERMANENT MAKE-UP

Microblading & Semi-Permanet Make-Up Price List

Consultation for Microblading £50 (Redeemable against treatment)	Semi-Permanent Eyeliner Colour Boost..... £340 (Top Lid)
Microblading £495 (Brows Only)	Semi-Permanent Eyeliner Colour Boost..... £200 (Lower Lid)
Microblading Colour Touch £330	Specialist Eyeliner..... P.O.A. (including Winged Eyeliner and Shading)
Consultation for Semi-Permanent Eyeliner £50 (Redeemable against treatment)	Consultation for Lip Liner and Lip Colour..... £50
Semi-Permanent Eyeliner £575 (Full Eye)	Lip Line and Blush..... £575
Semi-Permanent Eyeliner £400 (Top Lid)	Lip Line and Full Lip Colour £700
Semi-Permanent Eyeliner £300 (Lower Lid)	Lip Line and Blush Colour Boost..... £400
Semi-Permanent Eyeliner Colour Boost £400 (Full Eye)	Lip Line and Full Lip Colour Boost..... £500
	Saline Correction P.O.A.



Eye Treatments

Eyebrow Shape	£20
Eyebrow Threading	£20
Eyebrow Tinting	£16
Eyelash Tint	£25
Eyelash Tint, Eyebrow Tint & Shape	£52



Relax your eyes



Lycon Hot Wax

Using only the finest resins, natural ingredients and aromatherapy oils, Lycon delivers superior performance, removing stubborn hair as short as 1mm.

We use Lycon wax to deliver a more comfortable and thorough waxing experience. We aim to put you at ease so that you get the best results from your waxing appointment. To help you feel comfortable we recommend you follow our waxing etiquette guidelines on the following page. If you have any questions please don't hesitate to ask.



Hot wax. Cool location.

Waxing for her

Eye Brow	£20
Lip	£16
Chin	£16
Sides of Face	£16
Ear	£16
Nostril	£20
Half Leg (Lower Leg)	£32
Half Leg (Top Half)	£37
Full Leg Wax	£47
Under Arm Wax	£19
Half Arm Wax	£32
Full Arm Wax	£39
Standard Bikini Line Wax	£20
Extended Bikini Line Wax	£29
G String Bikini Wax	£40
Brazilian Wax	£49
XXX Wax	£52
Extra Areas	£16

Waxing for him

Eye Brow	£20
Ear	£16
Nostril	£20
Full Chest Wax	£52
Full Back Wax	£52
Quarter Body Wax	£32
Buttocks	£30
Intimate Bum	£30
Male Brazilian Wax	£60
Male XXX Wax	£75
Extra Areas	£19
Under Arm Wax	£19
Half Arm Wax	£32
Full Arm Wax	£39
Full Leg Wax	£60

Waxing Etiquette

Pre Waxing

- Prior to your visit to the salon don't use any lotions or oils on the areas you are having waxed. Any products will hinder the wax from sticking to the skin.
- Please shower or bath before your appointment.
- If your hair is longer than a quarter inch, please make sure you trim the hair with scissors or clippers. This will make your waxing experience more comfortable.
- Wear loose clothing, avoid strenuous exercise, direct sunlight or perfumed products and soap for 24 hours after waxing.
- You will have a towel to cover yourself.
- The therapist may ask you to help keep the skin taught around the area being waxed for a more thorough and less painful experience.
- Sometimes male clients may become aroused during waxing, however, please don't feel embarrassed, your therapist will remain professional and continue waxing.
- The welfare of our therapists is important, therefore we won't accept any inappropriate behaviour, you may be asked to leave and incur the cost of the treatment.

During

- We recommend you remove your underwear, if you are not comfortable with this we will provide you with a paper pair, which can be disposed of after.
- If you choose to wear your own underwear we can't accept responsibility for spillage of oil or wax on your under garment.

Post

- Schedule your next appointment for 3 to 4 weeks time; waxing is far more comfortable if you wax consistently and regularly.
- We recommend you use Lycon aftercare products, or Pevonia Body Preserve moisturiser, Silky Body Scrub and Dry Oil Moisturiser for best results. Please ask your therapist for advice on the best product for your skin.

Intimate waxing guide

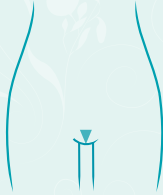
Ladies Waxing



STANDARD



EXTENDED



G STRING



BRAZILIAN

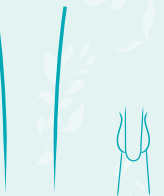


XXX WAX

Mens Waxing



BRAZILIAN



XXX WAX

“ Sharon and her team make you feel completely at ease and pampered. The salon is beautiful and exceptionally clean. Always a pleasure to visit. ”

— Anna Jones

St Tropez Tanning Treatment

Full Body Tan

£80 | 60 minutes

This classic 4 step St Tropez treatment is more than a tan. Achieving flawless natural results, this body treatment includes a full body polish exfoliation, tan enhancing moisturisation, classic tinted tanning cream application, and precise body buffing. No mess, no streaking, but a beautiful soft focus glow.

Legs Only Tan

£50 | 60 minutes

Application of tan enhancing moisturiser, classic tinted tanning cream and dry buffing.

We recommend that you wear loose dark clothing for your appointment and refrain from bathing for 24hrs or showering for 4hrs after application. Tan can last 4-7 days.



Nails

Mini Pedicure (No Polish)	£50
Mini Manicure (No Polish)	£45
Luxury Manicure	£60
Luxury Pedicure	£65
Shape & Polish	£40
Plus French Polish	£6



Massage Therapy

Relax, recharge and feel your best with a deep tissue massage tailored to your needs.



Release tension and help repair muscle

Swedish Full Body

£90 | 60 minutes

Swedish massage techniques are used to release tension from the deepest muscles of the body. While releasing tension from the surface layers of muscles, this method uses light, tapping, rhythmic strokes to help add relaxation and help repair muscle strain and alignment. Choose the length of time you require and we can tailor your treatment to suit you and your needs.

Marine Magnesium Body

£99 | 60 minutes

Marine Magnesium is formulated by nature in the unspoilt waters off the coast of Brittany, France. Marine Magnesium relieves muscular stiffness, cramping, aches and sensitivity. This exceptional massage formulation contains pure natural Magnesium Chloride, in a light, seawater-infused gel. Marine Magnesium is mixed with massage oil and uniquely massaged all over the body through a series of Swedish techniques. Feel the power of magnesium with the relaxation of deep massage.

Aromatherapy Full Body

£110 | 75 Minutes

A deeply sensory experience, this spa worthy massage uses graceful sweeping movements and cocoon motions to transport body and mind. The treatment starts with full body brushing and light hand touch therapy followed by a melt away massage for ultimate relaxation and positive touch connection. Choice between 3 oils to soothe, awaken and restore. A soft, serene and sumptuous massage bringing balance and calm.

Back, Neck, Shoulder

£45 | 30 Minutes

£65 | 45 Minutes

+ Add Marine Magnesium to any of our back massages for an extra £10

+ Add Deep Tissue to any of our back massages for an extra £10.

THE ELMS
(NATIONAL
TRUST)



DIRECTIONS FROM WEST:

From St Peter's Valley take La Chevé Rue and drive past the Elms, taking the first left on to La Rue à Georges. Follow the road and we are on the right hand side where you will see two mirrors opposite our drive.



MIRRORS



DIRECTIONS FROM THE SOUTH:

From St Peters Valley turn right at The Victoria Pub follow to the yellow line, turn left, first right and then you will find yourself on La Rue des Aix. Follow map from here.

Visit us...

Salon Opening Hours

Monday	Closed
Tuesday	8.30am - 5pm
Wednesday	9.30am - 8.30pm
Thursday	9.30am - 8.30pm
Friday	8.30am - 5pm
Saturday	8.30am - 6pm
Sunday	Closed

Cancellation Policy

We kindly request 48hrs notice to cancel, move or change your appointment, within this time a 50% charge will be incurred and no shows will be charged at 100%.

Unavoidable circumstances may warrant special consideration but please note that the above charges will apply to most cancellations. Thank you for understanding the importance of keeping your appointment.



pevonia

Natural ingredients. Professional re



The Beauty House

4 Roc Annick, La Rue es Bouefs, St Mary, Jersey JE3 3EQ
t. 01534 789000 e. appointments@thebeautyhouse.co.uk www.thebeautyhouse.je